

PRODUCT
INTRODUCTION

Toi:L
Time of illumination : Love yourself



L Global Co., Ltd.

@toi.l.official / info@toi-l.com / www.toi-l.com

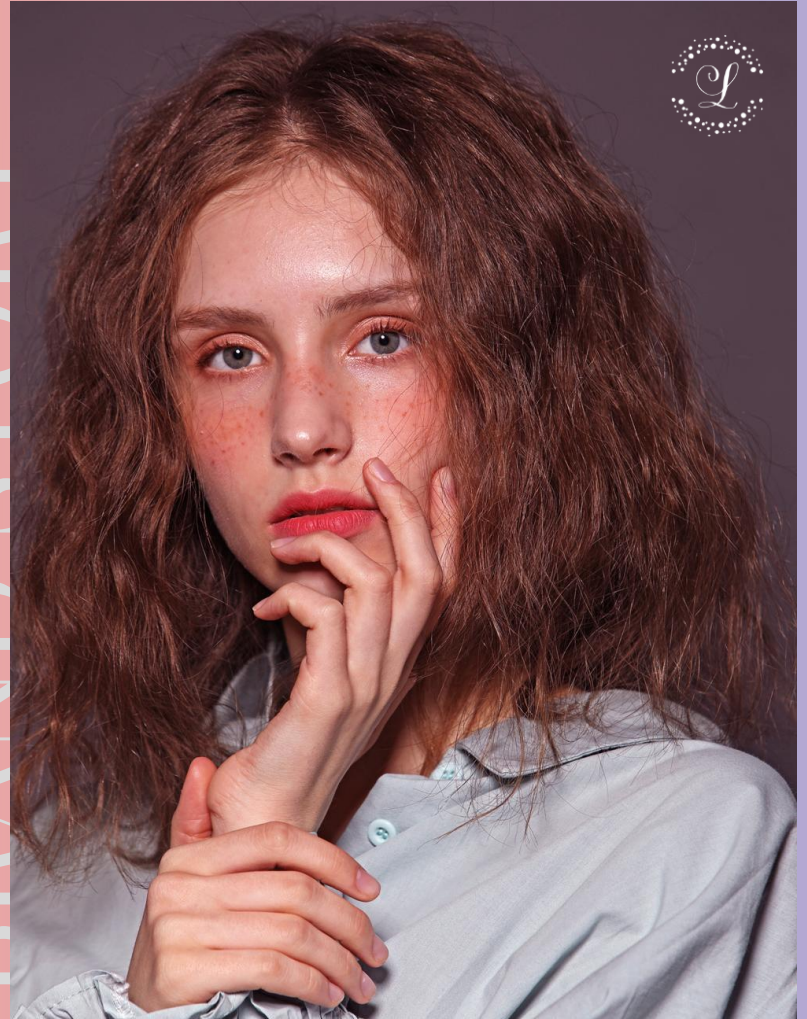
WELCOME TO TOI:L

'**Toi**' means '**You**' in French.
Toi:L is professional skincare brand which is created especially for 'Your Hand and Your Foot'.

Toi:L provides special pearly shining effect on your hand and foot to reveal your hidden internal beauty.

At Toi:L, we are always with who love themselves and do their best in their fields.
We provide you with more brilliant & beautiful moments.
We also support your beauty life with Querencia.

BRAND STORY



BRAND IDENTITY

**“Find your hidden light of beauty,
keep it and love yourself.”**



A Professional Hand & Foot Care Brand



+



=



Love Yourself

Illumination

Time of illumination
: Love yourself



Hands cannot hide your age.

Your face may hide your age,
but the wrinkles in your hands cannot.

Toi:L rejuvenates your hand!



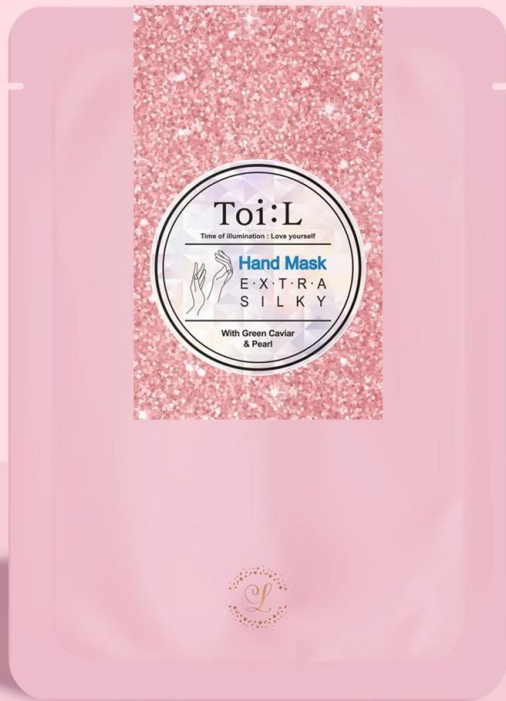
***Barefoot cannot be seen easily.
Only close one can see.***

Don't ever be afraid of showing your
foot to someone special.

No more hiding!



EXTRA SILKY HAND MASK



Moisturizing



Shining



Nourishing



Cuticle Care

Ingredients

Pearl

The solution to a good skin is pearl powder. Rich amino acid and natural mineral allows effective wrinkle reduction and makes your skin clear.

Green Caviar

Outstanding ingredient for natural moisturization and skin elasticity. Amino Acid helps moisturization and absorption. It also stimulates collagen which improves skin elasticity.



Avocado seed extract

Strong antioxidant effect by removing active oxygen



Coconut oil

High skin absorption allows quick delivery of nutritional contents



Shea butter

Moisturizes dry & rough skin



Rose hip oil

Contains 20 times more of Vitamin C than lemon which helps skin whitening



Asiatic pennywort extract

Helps with wrinkle prevention, wound healing, skin calming



Jojoba seed oil

Contains vitamin A which prevents rough skin



Ceramide

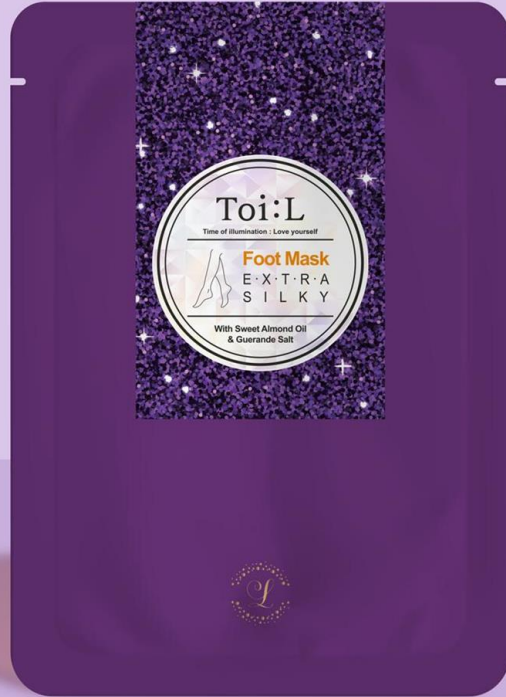
Quickly recovers damaged skin membrane & helps With skin regeneration



Beta-glucan

Soluble natural macromolecules allows excellent moisturization & stimulates collagen regeneration

EXTRA SILKY FOOT MASK



Moisturizing



Exfoliating



Nourishing



Cuticle Care

Ingredients

Guerande salt

Guerande salt fills up moisture from the inside. The mineral contents attracts moist to moisturize skin and also is effective in dead skin cell removal.

Sweet Almond oil

Almond oil has rich vitamin A, Vitamin E, and magnesium that makes skin soft and elastic. It has skin protection effect that helps with rough and dry skin.



Eucalyptus leaf extract

Natural botanical ingredient with excellent sterilization & antimicrobial effect



Bees wax

Forms a protective layer on skin that prevents loss of moisturization



Shea butter

Moisturizes dry & rough skin



Rose hip oil

Contains 20 times more of Vitamin C than lemon which helps skin whitening



Asiatic pennywort extract

Helps with wrinkle prevention, wound healing, skin calming



Jojoba seed oil

Contains vitamin A which prevents rough skin



Ceramide

Quickly recovers damaged skin membrane & helps with skin regeneration



Beta-glucan

Soluble natural macromolecules Allows excellent moisturization & stimulates collagen regeneration

Authentication

This clinical study requested by AriL International for the evaluation of cutaneous tolerance of ToiL Extra Silky Hand Mask and ToiL Extra Silky Foot Mask by primary irritant patch test was conducted after the approval based on standard operating procedures of Ellead IRB in accordance with Ministry of Food and Drug Safety (MFDS) regulations for approval regarding the functional cosmetics (2017-42)¹, Personal Care Products Council (PCPC) Safety Evaluation Guidelines² and Draize Dermal Irritation Scoring System³ with clinical reading according to the EPA

Summary of clinical study

Study title	Evaluation of cutaneous tolerance of ToiL Extra Silky Hand Mask and ToiL Extra Silky Foot Mask by primary irritant patch test
Study number	EL-1809125305218
Requestor	AriL International #204, 182, Hyoryeong-ro, Seocho-gu, Seoul, Korea
Research organization	Ellead Co., Ltd. 788 fl., 325, Haangsaek-ro, Bundang-gu, Seongnam-si, Gyeonggi-do, Korea
Duration of the study	September 17, 2018 ~ November 15, 2018
Time of	09:00 ~ 05:00 (KST) on 10/18/18, 10/25/18, 11/05/18, 11/15/18

Proved to have no irritation through skin irritation test

Representative director:

Kyung Soo Byun

Kyung Soo Byun
President

Research director:

Tae Kee Moon M.D.

Tae Kee Moon, M.D.
Dermatologist

3



The present document is property of Ellead Co., Ltd. It can not be misused and/or photocopied.

	Evaluation Guidelines and Draize Dermal Irritation Scoring System with clinical reading according to the EPA Dermal Classification System criteria as a standard.
	5. Assessment of adverse skin reactions by researcher and volunteer
Results	1. Volunteers: 33 (final 33 females, average age 46.65 ± 6.26 years). 2. Results: The result demonstrated that ToiL Extra Silky Hand Mask (#1) and ToiL Extra Silky Foot Mask (#2) have the grades of 'Negligible'. Also the test products did not cause any special adverse skin reactions during the test period other than those foreseeable or concomitant positive reactions of patch tests.
Date of report issue	November 15, 2018

5



The present document is property of Ellead Co., Ltd. It can not be misused and/or photocopied.

Toi:L X Catherine Muller

COLLABORATION PROJECT



Catherine Muller

- A well-renown French florist. Referred as Haute Couture Creator in the field of floral designing.
- In charge of luxury brand event decoration such as Cartier, Celine, Chanel, and Louis Vuitton, and special events for Opéra Garnier. Also responsible for Qatar royal weddings.
- Founded flower schools named after her in major cities around the world (Paris, London, New York, Seoul)
- A world-renowned flower designer, **Catherine Muller**, has collaborated with **Toi:L** to launch hand mask for the first time ever.



Just as how an excellent piece of art are created through an endless trouble and endurance of an artist, a beautiful flower design is created by the fingertips of florists who put their hands into cold water with strong chemicals and get countless cuts by thorns. The flower designs are perfected by these wounded hands. Therefore, I decided to collaborate with Toi:L because I wanted to give healing to the damaged hands of the people who use their hands a lot just like me.

- Catherine Muller (25 April 2019) L Global Co., Ltd. -

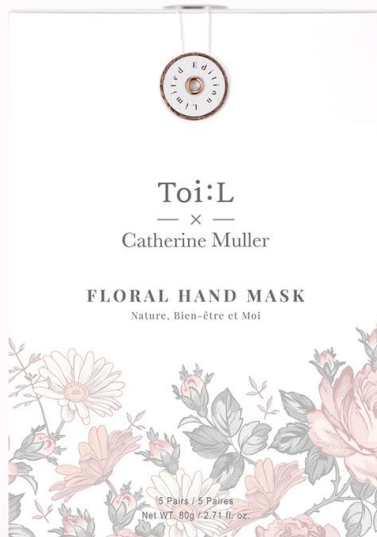


Inspired by the professionalism of the world-renown florist, Catherine Muller, who is filled with a shining passion to make the world beautiful, we have specially launched a hand mask with flower theme that delivers healing and calming effect.

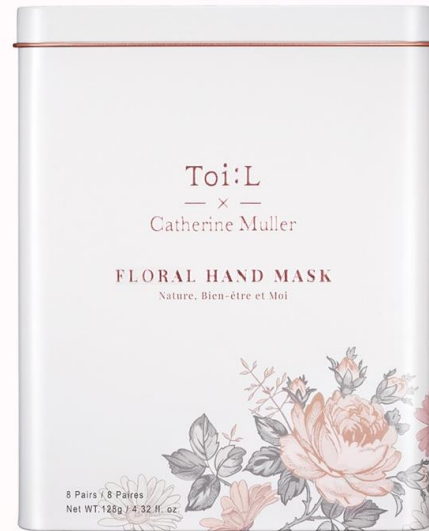
- Irene Lee (25 April 2019) L Global Co., Ltd. -

Nature, Bien-être et moi.

- Used Centella Asiatica extract and Madecassoside, which have excellent healing effect, and elderflower extract with outstanding antioxidation effect as the main ingredients.
- As a differentiator from other products, White Flower Complex (compound of 7 different types of flower extracts) and Ez Four Complex (compound of 4 different types of herb extracts) are contained to rejuvenate and revitalize skin.
- Especially themed with flower, our hand mask contains violet scent and flower and herbs extracts that were picked by Catherine to offers hand care as well as rest and healing to the mind.



FLORAL HAND MASK
1 BOX (5 PCS)



SPECIAL LIMITED EDITION
1 TIN CASE(8 PCS)

FLORAL HAND MASK



Soothing



Moisturizing



Shining



Nourishing



Cuticle Care

Ingredients



Centella Asiatica Extract

Healing and calming Effect

Also known as 'herb that wounded tiger roll around in,' it has an excellent healing and calming effect. It also has Madecassic acid in the leaves and stems help with skin regeneration and strengthen the skin barrier.



Hydrolyzed Jojoba Esters

Protects sensitive skin and refills moisture



Shea Butter

Moisturizes and reenergize dry and rough skin



White Flower Complex

Relieves skin stress and provides conditioning



Elder Flower Extract

Prevents skin trouble, improves skin tone

Because of its high concentration of Phenolic compound, Europeans call it as 'Native's medicine box'. It heals damaged skin and defends the skin from harmful



Ceramide NP

Recovers moisture barrier and forms moisture membrane



Madecassoside

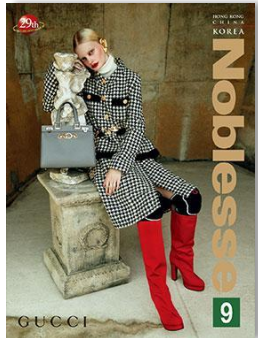
Skin regeneration, elasticity and skin irritation alleviation



Ez Four Herb Complex

Facial blemish and pore management

MAGAZINE & PRESS



기사

아직도 얼굴에만 팩하니, 나는 손과 발에도 한다!
'핸드 & 풋 마스크'

권연수 기자 leegoo@chosun.com

기사입력 2019.07.17

팩은 더는 얼굴만을 위한 것이 아니다. 얼굴과 함께 노출되지만 나이 들에 따라 쉽게 탄력이 떨어지고 주름이 생기는 손과 발은 관리가 소홀하기 쉽다. 거칠고 지친 손과 발에 영양을 공급해 주고 활력을 선사해 줄 '핸드 & 풋 마스크' 제품을 소개한다.

두아엘



▲ 사진 제공=두아엘

두아엘 '엑스트라 실키 핸드 & 풋 마스크'는 거칠고 건조한 손과 발에 즉각적으로 수분을 충전하여 속당김을 잡아주는 팩이다.

진주 가루와 그린 캐비어 성분을 함유한 핸드 마스크는 건조하고 갈라진 손을 맑고 촉촉하게 해주며, 계항드솔트와 스위트아몬드 오일 성분의 풋 마스크는 거칠어진 발에 수분 공급과 각질을 제거한다. 착용 중에 손과 발을 부드럽게 마사지해 주면 더욱 효과가 좋다.

인사이드

Weddings

ZENITH NEWS

CONSUMERWIDE
www.consumerwide.com

<POPUP STORE>



<SPONSORSHIP>

용평리조트
ALL SEASONS RESORT



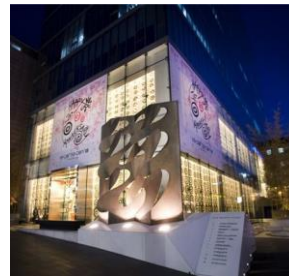
<OFFLINE SHOP>

I·market·U
SEOUL



Opening At I-Market-U

10·corso·como
SEOUL



Under Opening Process

<ONLINE SHOP>



Toi:L in
Time of illumination : Love yourself

SKINRx

ezwel



Catherine
Muller

사는 게 즐겁다!
LOTTE·COM

Shopping Smart
CJmall

Qoo10

Authentication

The Global Medical Research Center Co., Ltd. was entrusted with the "Toi:L x Catherine Muller Floral Hand Mask", which was commissioned by L Global Co., Ltd. for human skin primary irritation test. The Global Medical Research Center Co., Ltd. conducts the tests in accordance with Frosch & Kligman, The Cosmetic Toiletry, and the Fragrance Association (CTFA) guideline and the Global Medical Research Center Standard Operating Procedure (SOP).

Summary of Clinical test

Title	"Toi:L x Catherine Muller Floral Hand Mask" Skin Primary Irritation Test in Humans
Protocol identifying number	GMRC-19417-I6
Test organization	Global Medical Research Center Co., Ltd. Address: 17th floor, 107, Dosan-daero, Gangnam-gu, Seoul, Republic of Korea
Client	L Global Co., Ltd. Address: #204, 182, Hyoryeong-ro, Seocho-gu, Seoul, Republic of Korea

Proved to have no irritation through skin irritation test

Test Organization : The Global Medical Research Center Co., Ltd.

Head of organization/Principal Investigator : Kwang Hoon Lee, M.D., Ph.D
(Signature: )

Participant	34 healthy men and women (32 Participants completed the test, 2 participants dropped out)
Method	Procedure: 24 hours closed patch test on the upper back. Reading and interpretation: To evaluate the test results, we removed the patch after 24 hours. The skin reaction was visually assessed by researchers in 1 and 24hours after removal
Conclusion	The reaction score of "Toi:L x Catherine Muller Floral Hand Mask" commissioned by L Global Co., Ltd. is considered to be a non-irritating product.



Toi:L

Time of illumination : Love yourself

L Global Co., Ltd.

02 2088 0060

@toi.l.official

info@toi-l.com

www.toi-l.com

September 20th, 2019